

also for carefully structured and sequenced mastery of English cognitive academic language development. (See 19 TAC §89.1210(b).)

BILINGUAL/ESL-SUMMER-SCHOOL-INDICATOR-CODE (E1028) indicates whether the student participated in the Bilingual/ESL Summer School program as described in TEC §29.060 and 19 TAC §89.1250. To be eligible for enrollment in the Bilingual/ESL Summer Program, a student must be limited English proficient (LEP) and must be eligible for admission to kindergarten or first grade at the beginning of the next school year. LEP shall be determined by screening students using oral proficiency instruments approved by the Commissioner of Education.

BILINGUAL/ESL-SUMMER-SCHOOL-INDICATOR-CODE is collected in Submission 4 only.

CAREER-AND-TECHNICAL-ED-IND-CD (E0031) indicates whether the student is enrolled in a state-approved career and technical education course as an elective, or as a participant in the district's career and technical coherent sequence of courses. When assigning the CAREER-AND-TECHNICAL-ED-IND-CD, all Career and Technical Education courses are considered, regardless of course funding weight.

For Submission 1:

The CAREER-AND-TECHNICAL-ED-IND-CD is reported as a “1” or “2” only for those students enrolled on the PEIMS Fall snapshot date (AS-OF-STATUS-CODEs “B”, “D”, or “F”).

For Submission 3:

The CAREER-AND-TECHNICAL-ED-IND-CD is reported based on the end of year status for the student. The student's last CAREER-AND-TECHNICAL-ED-IND-CD would be reported for Submission 3.

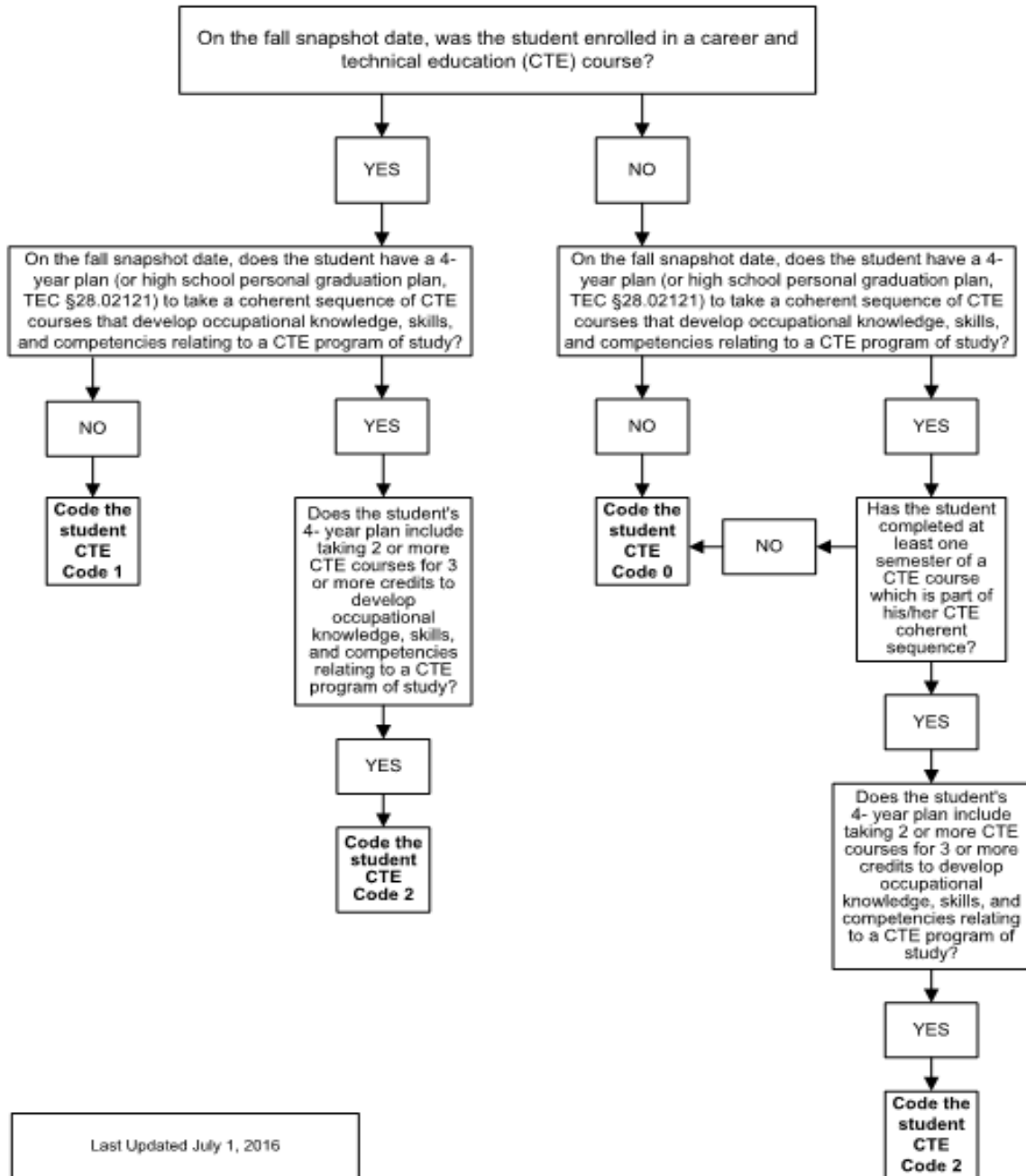
For example, if the student was a CAREER-AND-TECHNICAL-ED-IND-CD of “1” in the fall but changed to a CAREER-AND-TECHNICAL-ED-IND-CD of “2” for the spring, then the CAREER-AND-TECHNICAL-ED-IND-CD would be reported as a “2” for Submission 3. Students, who are coded as CAREER-AND-TECHNICAL-ED-IND-CD “1”, must have completed a CTE course during the course of the current school year. Students who are reported with a CAREER-AND-TECHNICAL-ED-IND-CD of a “2” must have either been enrolled in a CTE course during the school year, or have already completed at least one CTE course which is part of their CTE coherent course sequence during the course of the current school year.

The following table indicates when to report related Career and Technical Education complex type data:

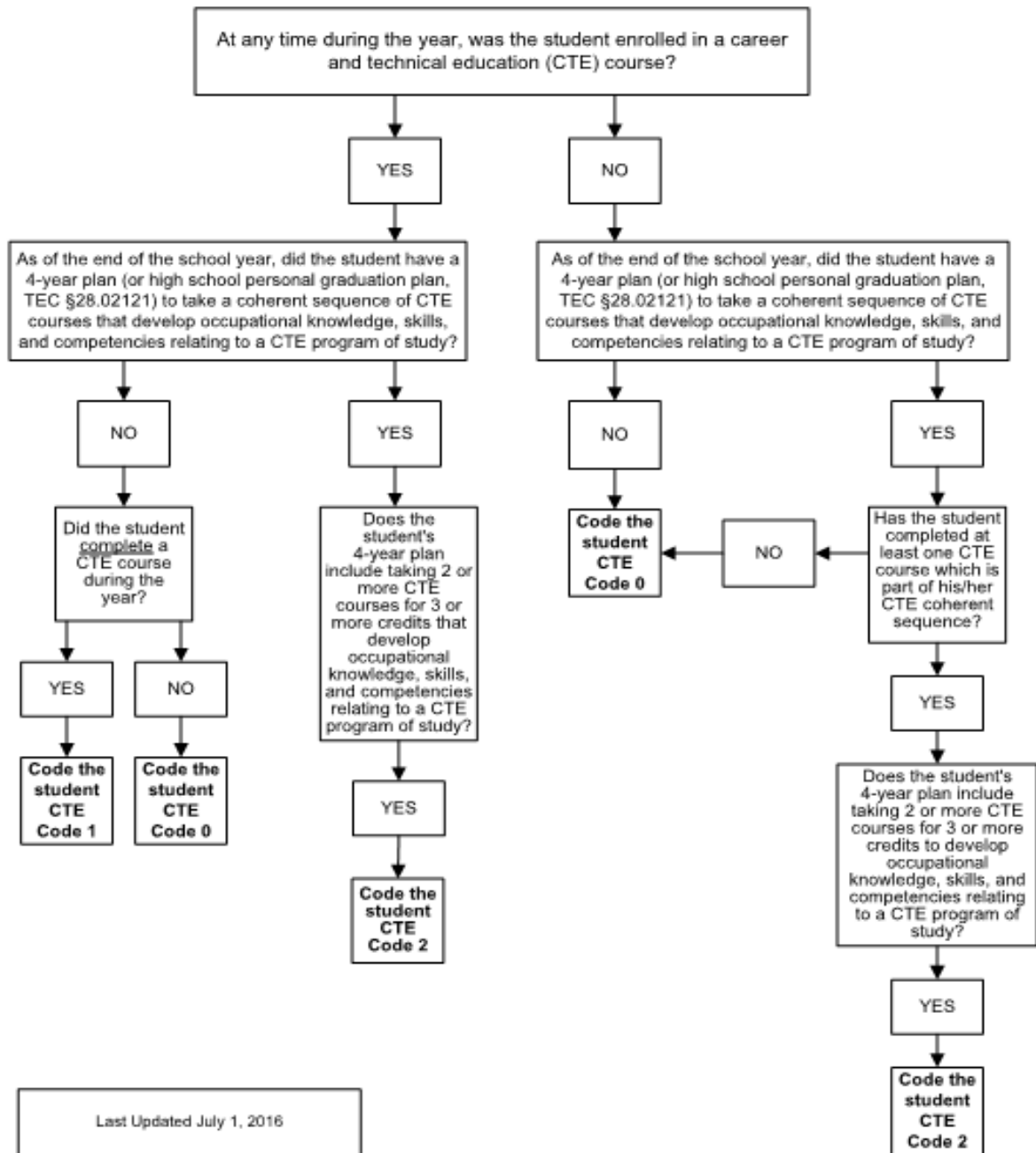
CAREER-AND-TECHNICAL-ED-IND-CD	Student Enrolled in CTE course on Fall PEIMS Snapshot Date?	41169 StudentCTEProgram AssociationExtension complex type reported? *	40170 CareerAndTechnicalEducation CourseExtension complex type reported?
0 – Not Enrolled in a CTE Course	No	No	No
1 – Enrolled in a CTE Course	Yes	Yes	Yes
2 – Participant in a Coherent Sequence of Courses	Yes	Yes	Yes
2 – Participant in a Coherent Sequence of Courses	No	Yes	No

* Note: Grade 7 and 8 students should only report for approved for Career and Technical Education for the Disabled (CTED) courses.

**Career and Technical Education Indicator Code
 Fall Submission Decision Chart (E0031)**



**Career and Technical Education Indicator Code
 Summer Submission Decision Chart (E0031)**



ESL-PROGRAM-TYPE-CODE (E1043) indicates whether the student is participating in a state-approved English as a Second Language (ESL) program. An ESL program in grades PK – 8 is a program of intensive instruction in English from teachers either certified or endorsed in ESL who use second language acquisition information to teach LEP students the English Language Proficiency Standards (ELPS). An ESL program in grades 9 – 12 is a program of intensive instruction in English from teachers trained in recognizing and dealing with language differences who use second language acquisition information to teach LEP students the English Language Proficiency Standards (ELPS). [See 19 TAC §89.1210(f).]